

W W U L F F

LIGHTNING **30E** SERIES
MANUAL

RESEARCH | DEVELOPMENT | PRECISION

#IAMWULF

CONTENTS

Overview	3
Specification	4
What's in the Box	6
Reticles	6
Mounting the Rifle Scope	7
Ocular Lens Adjustment	8
Diopter Lock Function	9
Adjusting Parallax	10
Adjustments, Windage & Elevation	11
Initial Bore Sighting & Zero	15
Maintenance	16
Warranty	17

#IAMWULF

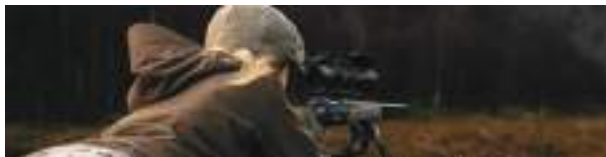
OVERVIEW

Joining the WULF Lightning Series is the WULF Lightning **30E** 4-16x50 and 6-24x50 MRAD Rifle Scopes.

These 30mm Rifle Scopes offer superb value for money optics, features and reliability. These are the ideal scopes for entry-level shooters who are looking for a feature-rich scope for their Rimfire, Air Rifle or Centerfire.

Some of the highlight features include an illuminated SFP glass-etched reticle, 30mm tube, side focus, locking turrets and matching MRAD reticle and click value.

As with all WULF Rifle Scopes, this fantastic series is covered by our Titanium Lifetime Warranty.



SPECIFICATION

Lightning 30E Model	4-16x50	6-24x50
SKU	WU9118	WU9119
Mode Type	SF SIR	SF SIR
Focal Plane	SFP	SFP
Magnification	4-16x	6-24x
Tube Diameter	30mm	30mm
Reticle Type	W-MIL2	W-MIL2
Ocular Lens Diameter	36mm	36mm
Objective Lens Diameter	50mm	50mm
Mounting Length	150mm (5.91in)	155.6mm (6.1in)
Objective/Field of View/ (degrees)	4.7-1.2°/8.2-2.1m	3-0.76°/5.3-1.3m
Exit Pupil	12.66-3.07mm	8.42-2mm
Eye Relief	103.4-90.4mm	109.9-90.8mm



Lightning 30E Model	4-16x50	6-24x50
Diopter Adjustment	- 2.0 / + 2.0	- 2.0 / + 2.0
Max. elevation/windage adjustment range (MIL)	23MIL+17.4MIL	17.4MIL+11.6MIL
Parallax correction (yds)	10yds-∞	10yds-∞
Turret Type	Lock & zero reset	Lock & zero reset
Turret Click Value	0.1 MRAD	0.1 MRAD
ADJ Range Per Revolution	8 MIL	8 MIL
Illumination Type	RED/Black	RED/Black
Illumination Scales	6 scales for Red	6 scales for Red
Battery	CR2032	CR2032
Working Temperature	-20 °C / +55 °C	-20 °C / +55 °C
Length (mm)	13.9in (354mm)	14.4in (366mm)
Weight	700g/24.69oz	700g/24.69oz

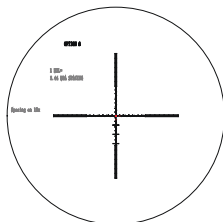


WHAT'S IN THE BOX

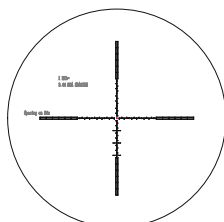
- WULF Lightning 30E 4-16x50 or 6-24x50 Rifle Scope
- Flip-Up Covers
- 9-11mm + Picatinny Rings
- Cleaning Cloth
- Manual

Please Note: CR2032 Battery for illumination is not included.

RETICLES



4-16x50 MRAD



6-24x50 MRAD

MOUNTING THE RIFLE SCOPE

When mounting the rifle scope, please use the appropriate scope mount for your rifle receiver, i.e picatinny to picatinny. The WULF Lightning 30E Series have a 30mm monotube chassis, so ensure 30mm diameter scope rings are used.

- Fix the rings to the rifle base. Do not tighten fully and use a torque wrench for both ring caps and mount bases.
- Next, remove the ring tops and gently lay the rifle scope into the rings. The rifle scope should be mounted as low as possible as to not touch the barrel, rear sight, or the receiver.
- Prior to tightening the rings, take a look through the rifle scope in your normal shooting position and adjust the rifle scope until you find the furthest point forward that allows you to see a full field of view.
- Turn the rifle scope in the rings until

the reticle is in the upright position and the elevation turret is on top. Use a reticle levelling system to ensure the scope is level to the rifle and the reticle is not canted.

- Continue to tighten the base screws evenly, securing the mounts to the rifle base and tighten the ring top screws evenly on each side. You can now look to boresight the rifle scope to the rifle to make zeroing the optic easier.

Please ensure you do not over tighten the rings. This can damage the rifle scope and affect the performance. (16i /lbs) (1.33 ft/lbs) (1.8 Nm) for ring top screws and (30 in/lbs) (2.5 ft/lbs) (3.4 Nm) for ring base screws.

OCULAR LENS ADJUSTMENT

The WULF Lightning 30E Rifle Scopes are fitted with an adjustable ocular focus. To focus your eye characteristics to the rifle scope to ensure a perfect picture of the reticle, follow these steps:

- With the rifle scope set to about half

magnification, hold the rifle scope about 3-4 inches from your eye and look through the eye piece at an area such as a plain wall.

- If the reticle is not sharply defined, turn the eyepiece a few turns.
- If the focus gets worse, turn it the opposite direction.

DIOPTER LOCK FUNCTION

Once your eyepiece position is chosen, the diopter lock ring will help to fix your personal diopter position by locking the ring to the eyepiece firmly. The advantage is that once this is set, this adjustment will not need to be altered in the future and cannot be accidentally changed.



ADJUSTING PARALLAX

Parallax is the apparent movement of the reticle in relation to your target when your eye moves off centre to the scope.

Adjusting parallax will also focus your target and reticle together for clarity in both optics field.

To check if the parallax is set correctly, move your eye slightly in a few different directions - side-to-side and up and down, the parallax free target shouldn't move in relation to the reticle and if your eye piece is focused correctly both your target and reticle will be clear in relation to each other. The parallax markings do not necessarily conform to the exact distance as it will vary dependant on your own vision.

Resetting Adjustment Turrets with Zero Reset

WULF rifle scopes feature windage/ elevation turrets that allow you to re-index the zero indicator after sight-in without

disturbing your settings. Though not required to do, this process will allow you to quickly return to your original zero if temporary corrections are dialled in the field.

Reset the Windage and Elevation Turret

- While firmly holding the turret, loosen and remove the grub screws.
- Lift the turret off of the scope and adjust the turret to reposition the zero mark on the index line.
- Install the turret and reinstall and tighten the grub screws. This then establishes the new zero point.

Reticle Illumination Control

It is recommended that the CR2032 battery should be removed from the scope until the IR is required. To fit, unscrew the cover and insert battery checking it is the correct way up.

Rotate the adjusting knob until the desired level of brightness is achieved.

Windage & Elevation Adjustments

4-16x = 0.1 MRAD

6-24x = 0.1 MRAD

For the Lightning 30E 4-16x50 rifle scope, the total elevation travelling space is 23.2 MIL (Miliradians), within 2.9 revolutions of the adjustment, which gives you 8 MIL adjustment in a single revolution. Your rifle scope will be calibrated in MIL adjustments. the elevation turret offers 0.1 MRAD per click.

The total windage travelling space is 17.4 MIL, within 1.8 revolutions for MRAD adjustment, the windage turret offers 0.1 MRAD per click as well.

For the Lightning 30E 6-24x50 rifle scope, the total elevation travelling space is 17.4 MIL, within 2.2 revolutions of the adjustment, which gives you 8 MIL adjustment in a single revolution. Your rifle scope will be calibrated in MIL adjustments and the elevation turret offers 0.1 MRAD per click.

The total windage travelling space is 11.6 MIL, within 1.5 revolutions for MRAD adjustment, the windage turret offers 0.1 MRAD per click as well.

Start by adjusting the windage and elevation turrets by firstly pulling out the turret from the lock position. Move the turrets in the direction you wish the bullets point-of-impact to change. To make the adjustments, rotate the adjustment dial in the appropriate direction (up/down or left/right) as indicated by the arrows on the side of turrets.

After sight-in, you can realign the zero marks on the turrets with the reference dots if you wish. Then you can press the turrets down into the lock position.



INITIAL BORE SIGHTING AND ZERO

1. Mount your scope to your rifle adhering to the mount manufacturers recommended torque setting using an appropriate Torque Wrench/Driver. Ensure both the windage and elevation turret screws are tightened (please note do not overtighten as these are very small allen grub screws).

Then unlock turrets by pulling upwards to allow click adjustment for zeroing reticle.

2. An initial boresight of your scope can be completed by either removing the bolt from the rifle and sighting the target through your barrel or alternatively by using an optical collimator or laser boresighter.

Initial bore sighting can also be achieved by mounting the scope to the rifle and firing an initial 3-shot group and then aligning the centre of the reticle over this group.

To achieve accurate alignment with this method the rifle must be securely clamped to a rest so during turret adjustment the rifle cannot move.

MAINTENANCE

Cleaning

The WULF rifle scopes are fully waterproof and fog proof and require very little maintenance other than periodically cleaning the exterior lenses. The exterior of the scope may be cleaned by wiping with a soft, dry cloth.

When cleaning the lenses, be sure to use products, such as the lens pen or cleaning cloth, that are specifically designed for use on coated optical lenses.

Blow away any dust or grit on the lenses prior to wiping the surface or a very small amount of water or pure alcohol, this can help remove stubborn marks such as dried water spots.

Lubrication

All components of the scope are permanently lubricated, so no additional lubricant is needed.

Storage

If possible, avoid exposing your rifle scope to direct sunlight or any very hot location for long periods of time.

WARRANTY

We know first-hand the importance of reliability and performance. Split seconds and exact distances are common in our game and we need equipment that will consistently perform and last.

Our products are designed and manufactured to fulfill and exceed the demands of our users, and to withstand the elements, which is why we ensure each WULF item passes the strictest of quality controls.

However, we know that on the rarest of occasions things can go wrong which is why we offer the WULF Titanium Warranty on all our products under normal use.

NO QUESTIONS. NO COSTS. NO WORRIES.

WULF Optics

5 – 7 Osprey Road, Sowton Industrial Estate,
Exeter, EX2 7JG

info@wulfoptics.com

The WULF Titanium Lifetime Warranty does not cover loss, theft, deliberate damage or cosmetic damage that does not hinder the performance of the product.

Please refer to the dealer you purchased from for all warranty questions and issues.







WWW.WULFOPTICS.COM

RESEARCH | DEVELOPMENT | PRECISION

#IAMWULF

