



ELLTECH

**WIDESCREEN WSNVG-22
NIGHT VISION GOGGLES
MANUAL**

CONTENTS

THANK YOU - 3

OVERVIEW - 4

SPECIFICATION - 5

HOW-TO - 7

WARRANTY - 16



THANK YOU FOR CHOOSING ELLTECH



With over 50 years of Shooting Optics knowledge and experience in the UK and European market, we, Optics Warehouse, have tried and tested a multitude of Optics throughout the decades to see what works, what does not, and what is missing. It was the latter that got us thinking and with this, ELLTECH was born.

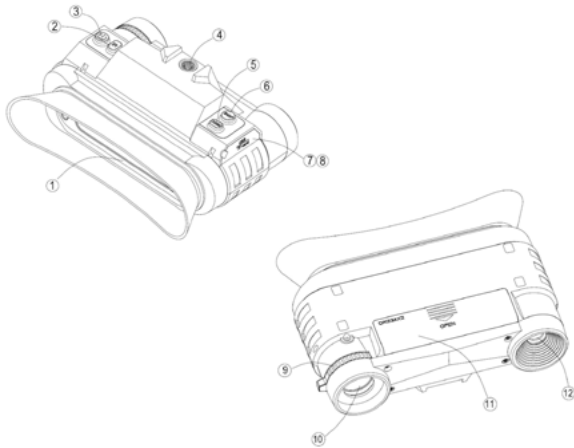
We want a World where every Shooter, Hunter and Outdoor Enthusiast is be able to own the finest equipment without cost being a factor. That is what ELLTECH is here to do.

Thank you for choosing ELLTECH. Now embrace and own the power and performance ELLTECH has to offer.



OVERVIEW

SPECIFICATION



Parts Overview:

1. Ocular
2. IR button
3. Power button
4. Connecting hole for Head Strap
5. Zoom button
6. Snap button
7. USB Port
8. TF card slot

Optical Performance	Magnification Power 1~3.5X15 Digital Zoom Magnification, Max 3.5x Field of View 22° Objective Aperture 15mm Exit Pupil Distance 40mm F# for Objective Lens 1.3
Video Output	240x536 Resolution AMOLED OSD Menu Display
Image	CMOS High-sensitivity Sensor Size 1/2.8" Resolution 1920X1080
IR LED	3W Infrared LED with 940nm
Micro SD Card	Support SDHC 4GB~128GB TF Card
Hardware Buttons	Power On/Off or MODE Snap ZOOM IR Switch or Down
Operation	Preview Record MOV File in SD storage Playback Media File from SD Storage
Size	Dimensions: 140mmx75mmx58mm Weight: 300g (without battery)



Power	External Power Supply- Type C 5V/2A 2pcs CR123A Battery 4V-6V/2pcs 16340 Li Battery 6V-8.2V Battery Life: 6 hours working time with IR off Low Battery Warning
System	3 Modes (Video, Playback, Menu) Video Record Playback Video Delete Video 5 Levels IR Switch for USB Power, 3 Levels IR Switch for Battery Auto Power Off (Off / 3 min / 5 min / 10 min) Language: English / Français / Deutsch / Italiano / Español / Svenska / Polski Light Freq. 50/60HZ Format OLED Brightness 4 Levels Version
What's in the Box	NV Goggles/J-ARM/Type-C usb cable/ Storage pouch/Head strap/Connecting screw/2x CR123A batteries
Warranty	3 Years
SKU	EL0150

HOW-TO

Battery Installation

Open the battery cover and install 2x CR123A batteries, being sure to follow the polarity markings inside the battery compartment. Close the battery cover. Please pay attention to the direction of the battery. Note that this unit is Li-ion 16340 rechargeable battery compatible.

Inserting/Removing the TF Card

Insert the TF card into the TF card port and push until it locks in place.

To remove the installed TF card, please push the TF card inward to release it.

Storage Capacity: 32GB is recommended

Note: The device will show “Please insert SD card” if the TF card is not installed.

Turning On/Off the Night Vision Goggle

Power On: Press and hold the Power button for about 3 seconds to turn on the night vision goggles. Press the Power button again for about 3 seconds to turn off the night vision goggles.



Key Button Features

Power

Long press: Power ON/OFF

Short press: short press this button to switch between video/playback/and men

Snap

In video mode: Press to take video. To stop recording, press this button again.

In playback mode: Press to Play or stop play the video.

In Menu mode: Press to select.

Zoom

In Video Mode: Press to zoom out.

In Playback Mode: Press to delete

In Menu Mode: Press to select the next menu listing.

IR

In Video Mode: Press to turn on the infrared light. With each additional click, the IR brightness will increase.

In Playback Mode: Press to select the next video.

In Menu Mode: Press to select the previous menu listing.

Record Video Fuction

Record Video: Press the [POWER] button and select the video mode. The 'Film Camera' icon will appear in the top left corner of the screen. It means you have entered the video function. Press the [SNAP] button to start recording video and press the [SNAP] button again to stop recording.

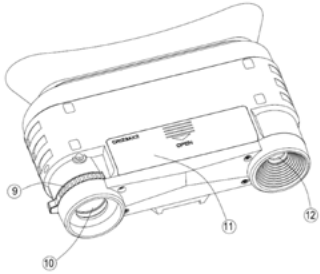
Watching Stored Videos: short press the [POWER] button and select playback mode. Press [SNAP] to play the video.

Deleting Stored Videos: In playback mode, press the [ZOOM] button to select delete or protect the video.



Focusing

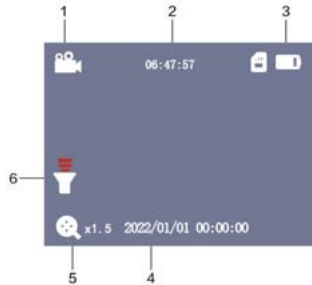
Target the object you would like to view and turn the focus wheel located just below the objective lens until the image on the screen is sharp and clear. The focusing wheel is No.9 in Parts overview picture.



LCD Display Information

Display in Video Mode

- 1: Icon displaying that you are in Video Mode
- 2: Remaining time of recording
- 3: Battery power
- 4: Date/time
- 5: Digital zoom
- 6: Brightness of IR from 1 to 3 (while plugging in USB power supply the IR brightness from 1 to 5)



Format SD

Select to format the TF card



Format is an operation that initializes a partition on a disk or disk. This usually causes all files in the existing disk or partition to be erased. You can choose cancel or ok by [IR] (up arrow) and [ZOOM] (down arrow). Lastly press [SNAP] to confirm.

Auto Power Off

Power Off Mode: The night vision goggles can be set to automatically shut down when not operating after the selected period of time. The default is OFF.



Date Stamp

When you select on, the time and date will be displayed on the screen. When you select off, the date and time will not be displayed on the screen.



Date/Time

IR: UP

ZOOM: DOWN

SNAP: OK

Find Date input function by [ZOOM] and [IR]. Press [SNAP] to confirm and start to set the date.[IR] is up arrow. [ZOOM] is down arrow. [SNAP] is “ok” button. After setting, you can press [MODE] again to exit.



Night Mode

There are two night modes. When you press the IR button, the mode you selected will be displayed.



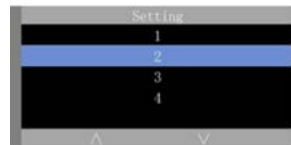
Frequency

You can choose 50Hz or 60Hz by [IR] (up arrow) and [ZOOM] (down arrow). Lastly press [SNAP] to confirm. Then choose cancel to exit.

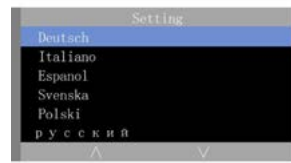
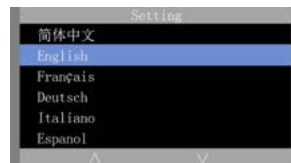


Backlight

Choice of 4 levels.



Language



Default Setting

When you choose OK, all settings will return to the default settings



Version

The software version of the device.



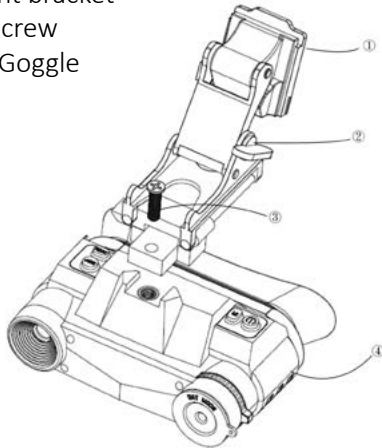
Using IR Light in Darkness

This device can be used in complete darkness when using the built in IR (infrared) light.

Press the [IR] button to activate the infrared light. Remove the IR Lens cover and press the [IR] button to select between the 3 levels of brightness (while plugging in USB power supply the IR brightness from 1 to 5).

Connect the Goggle and Helmet Mount Bracket

1. Connect to helmet
2. Helmet mount bracket
3. Connecting screw
4. Night Vision Goggle



Transmitting Stored Videos and Photos to a Computer

Using a USB cable, you can connect the night vision binoculars device to a computer.

You can find the stored photo/video files on the computer by looking under “My computer / removable disk”.

Once the removable disk is selected, you can view, delete, move, or copy any video.

Care and Maintenance

Clean the device only with a dry or slightly damp, lint-free cloth. Do **not** use abrasive cleaners to clean the device.

This device is a high-precision optical instrument, so to avoid damage, please avoid the following practices:

- Using the device in ultra-high or ultra-low temperature.
- Keeping it or use it in moist environment for long.



- Delivering or using it in strongly shocking environment.

Please Note: Remove the batteries from the device if it is not used for a longer time.

3 YEAR WARRANTY

For Warranty services please visit www.elltech.uk and contact our Customer Service Department for return instructions. If you need to return the product, please ensure you keep the shipment and tracking records. We cannot be responsible for your product until it has been received by our Customer Service Department.



ELLTECH

FIND US AT:
WWW.ELLTECH.UK